

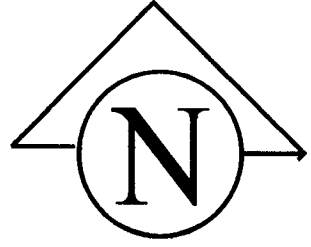
# State of Wyoming Corner Record

(In compliance with the *CORNER PERPETUATION AND FILING ACT*, Wyoming Statutes, 1977, Section 36-11-101, et. seq., and the rules and Regulations of the Board of Registration for Professional Engineers and Professional Land Surveyors).

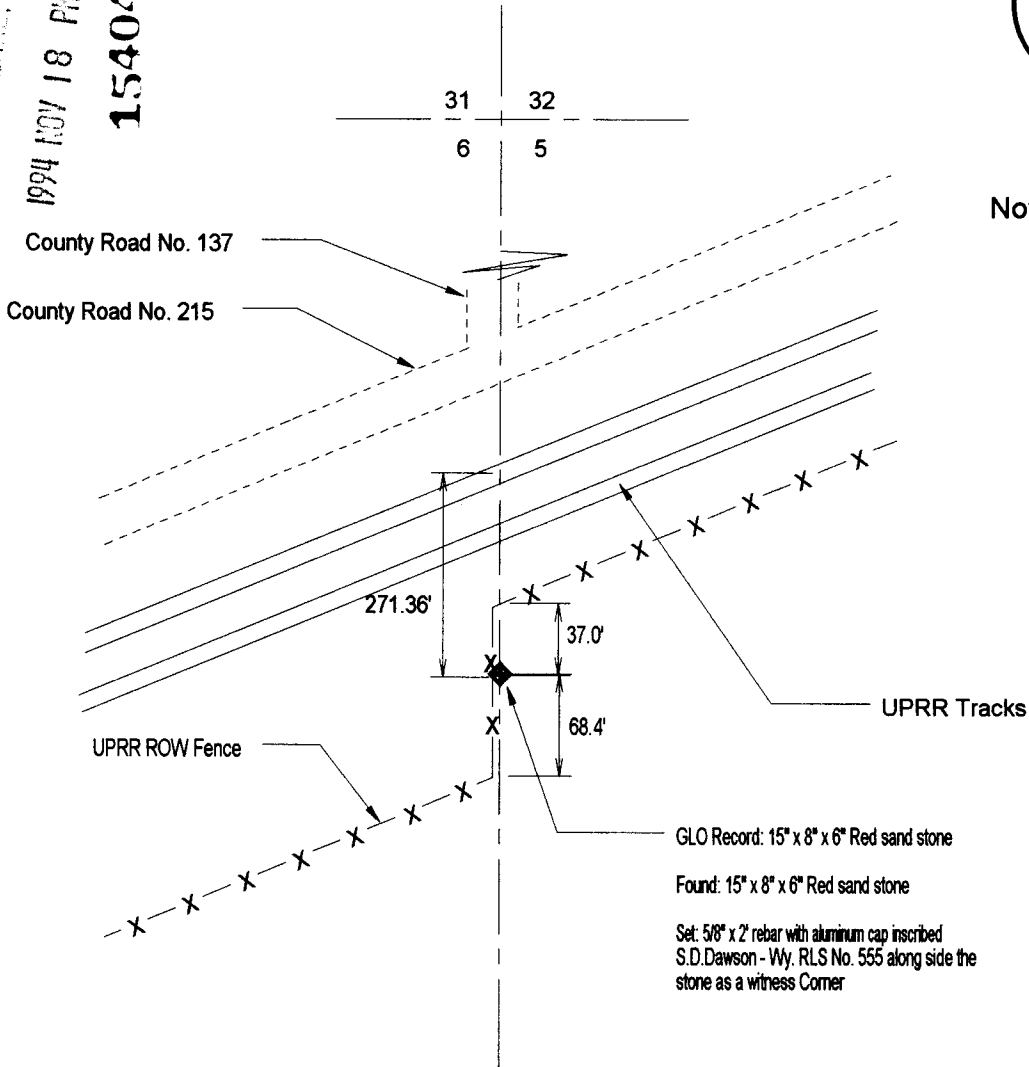
Reverse side of this form may be used if more space is needed.

**Record of original survey and citation of source of historical information (if corner is lost or obliterated). Description of corner monumentation evidence found and/or monument and accessories established to perpetuate the location of this corner. Sketch of relative location of monument, accessories, and reference points with course and distance to adjacent corner(s) (if determined in this survey). Method and rationale for reestablishment of lost or obliterated corner.**

RECEIVED  
 LARAMIE COUNTY CLERK  
 CHEYENNE, WY  
 1994 NOV 18 PM 4: 27  
 154046



No Scale  
 Date Prepared :  
 November 18, 1994



Date of Field Work July 1994

Office Reference J-S Ranch

**CROSS INDEX DIAGRAM**

	1	2	3	4	5	6	7	8	9	10	11	12	13	14	15	16	17	18	19	20	21	22	23	24	25
A																									
B																									
C																									
D																									
E																									
F																									
G																									
H																									
J																									
K																									
L																									
M																									
N																									
O																									
P																									
Q																									
R																									
S																									
T																									
U																									
V																									
W																									
X																									
Y																									
Z																									

Firm / Agency, Address

Cornerstone Surveying Company

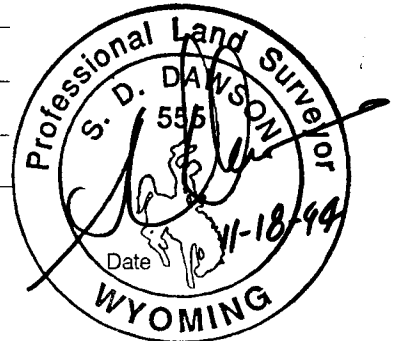
4005 Snyder Avenue

Cheyenne, Wyoming

Telephone Number 307 - 637 - 6958

This corner record was prepared by me or under my direction and supervision.

SEAL & SIGNATURE



Corner Name w 1/4

Section 5

14

64

6th

P.M. Cross Index No. C-5

SBRPEPLS/PLSW: March 1994